

Professionall

Solutii profesionale pentru echipamente profesionale



GAS COMPONENTS



ELECTRIC COMPONENTS



WATER TECHNOLOGY



MECHANICAL COMPONENTS



TOOLS

Spare parts suitable for

BIZERBA



solenoid valves

solenoid valves (water)

metal






PARKER

spare parts and accessories

valve bodies



1

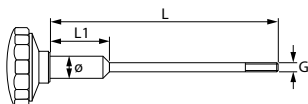
No.	370062	Ref. No.	BE01
description	solenoid valve body PARKER 3-ways outer cone		
accessories for	370062		
	No. 371029	Ref. No.	—
	solenoid coil PARKER 230VAC 9VA coil type ZB09 seat ϕ 14mm H 33mm W 34mm D 43mm		
	No. 371030	Ref. No.	—
	solenoid coil 24VDC 12VA coil type ZB12 seat ϕ 14mm		
	No. 371033	Ref. No.	—
	solenoid coil PARKER 230VAC 9VA coil type YB09 with cable seat ϕ 14mm		
	No. 371036	Ref. No.	solenoid coil —
	24VAC 9VA coil type ZB09 seat ϕ 14mm		
	No. 371095	Ref. No.	—
	O-ring Viton thickness 1.78mm ID ϕ 6.07mm Qty 1 pcs		
	No. 371100	Ref. No.	—
	O-ring silicone thickness 1.78mm ID ϕ 6.07mm Qty 1 pcs		

equipment-specific units

for slicers

locking screws

1



No.	697726	Ref. No.	351CE501
description	locking screw thread M7 L 277mm ϕ 10mm L1 120mm		

blades

special



1

No.	697845	Ref. No.	N/A
description	slicing machine blade ED ϕ 330mm seat ϕ 270mm 4 hole ID ϕ 57mm Hmm 100Cr6		

standard



1

No.	697809	Ref. No.	1050
description	slicing machine blade ED ϕ 250mm seat ϕ 54mm 4 hole ID ϕ 203mm H 17mm C45 standard VS6/VE6 suitable for BIZERBA		



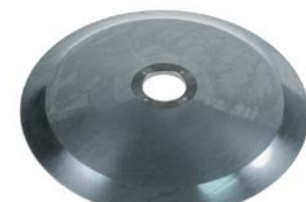
1

No.	699496	Ref. No.	N/A
description	slicing machine blade ED ϕ 330mm seat ϕ 40mm 3-hole ID ϕ 275mm H 17mm C45 standard suitable for BIZERBA		



1

No.	697375	Ref. No.	60530101500
description	slicing machine blade ED ϕ 330mm seat ϕ 57mm 4 hole ID ϕ 270mm H 23mm 100Cr6 standard		



1

No.	697812	Ref. No.	N/A
description	slicing machine blade ED ϕ 350mm seat ϕ 57mm 4 hole ID ϕ 290mm H 23mm 100Cr6 standard suitable for BIZERBA		

grindstones



1

No.	697565	Ref. No.	N/A
description	grindstone ø 40mm thickness 10mm bore ø 6mm grained fine with bevel, without hub		

miscellaneous



1

No.	697839	Ref. No.	N/A
description	ball bearing ø 25mm W 7mm ID ø 7mm hole ø 6.8mm		

for bandsaws

saw blades

width 16mm



1

No.	699050	Ref. No.	50004500000
description	saw blade L 2430mm W 16mm thickness 0.5mm tooth spacing 6mm		

fastening material

screws

countersunk screws



1

No.	560077	Ref. No.	57629520000
description	countersunk screw thread M5 L 10mm SS DIN 963/ISO 2009 Qty 20 pcs intake slotted head ø 9.2mm		