

Spare parts suitable for:
PAVONI

Spare parts suitable for coffee machines



Furnizor ProfessionalI Srl.
Str. Bucegi 15/2, Cluj Napoca. Romania

TEL: 004 - 0745 638 312
Fax: 004 - 0364 816 932

Email: contact@mag-pro.ro
Web: www.mag-pro.ro

Solenoid valves

Scem/Parker



| Item | Order | Description |
|------|--------|-----------------------------|
| 1 | 370057 | cpl., 3 ways, 230V AC |
| 2 | 370062 | Solenoid square base |
| 3 | 370206 | cpl., 2 ways, 1/8", 230V AC |
| 4 | 371029 | Magnetic coil, 230V AC |

Lucifer



| Item | Order | Description |
|------|--------|-----------------------------|
| 1 | 370053 | cpl., 3 ways, 230V AC |
| 2 | 370061 | Solenoid square base |
| 3 | 370072 | cpl., 1/8", 2 ways, 230V AC |
| 4 | 371031 | Magnetic coil, 230V AC |

Accessories

Scem/Parker, Lucifer



| Item | Order | Description |
|------|--------|------------------|
| 1 | 371090 | Plug |
| 2 | 371095 | O-ring (viton) |
| 3 | 371100 | O-ring (silicon) |

Solenoid valves

Sirai



| Item | Order | Description |
|------|--------|-----------------------------|
| 1 | 370168 | cpl., 1/8", 2 ways, 230V AC |
| 2 | 371071 | Magnetic coil, 230V AC |
| 3 | 371091 | Plug/small |

Pressure switches, switches

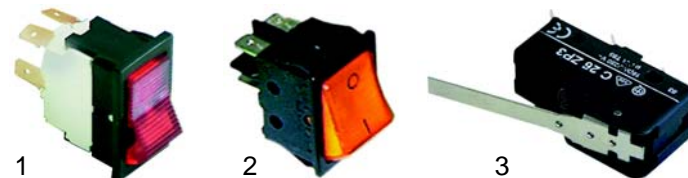


| Item | Order | Description |
|------|--------|--------------------------|
| 1 | 541021 | Pressure switch |
| 2 | 345147 | Main switch, 2 positions |

Switches

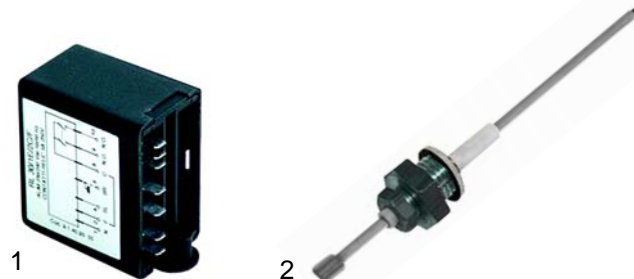


| Item | Order | Description |
|------|--------|---------------------------|
| 1 | 346014 | Switch, 25 A, 2 position |
| 2 | 346123 | Switch, 16 A, 3 positions |



| Item | Order | Description | Socket dim. |
|------|--------|-----------------|-------------|
| 1 | 346074 | Switch, 2 poles | 35 x 20mm |
| 2 | 301002 | Switch, 2 poles | 30 x 22mm |
| 3 | 345269 | Microswitch | - |

Level controller



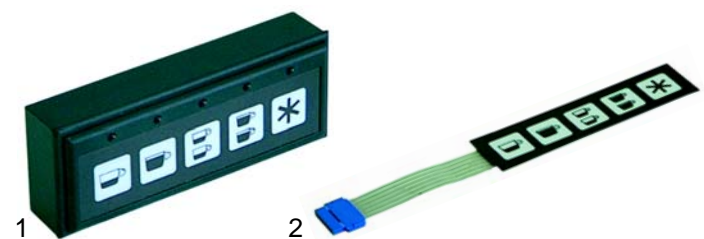
| Item | Order | Description |
|------|--------|---------------------------------------|
| 1 | 400019 | Level controller (RL30/1E-2C/F), 230V |
| 2 | 400020 | Level probe, 150mm |

Flowmeter



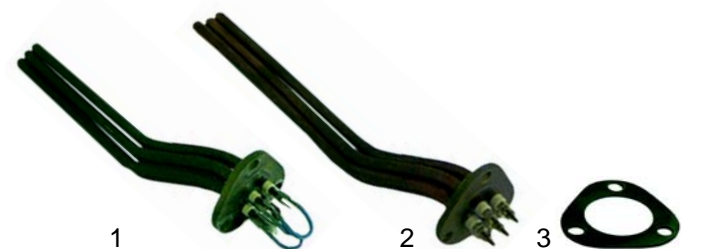
| Item | Order | Description |
|------|--------|-------------------|
| 1 | 400004 | Flowmeter, 1/4" |
| 2 | 400256 | Spring |
| 3 | 400257 | Flowmeter turbine |
| 4 | 400258 | Case gasket |

Key push buttons

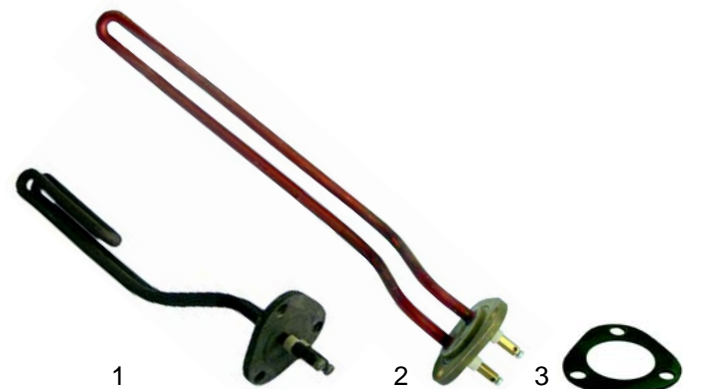


| Item | Order | Description |
|------|--------|----------------------|
| 1 | 400378 | Key push button/cpl. |
| 2 | 400334 | Push button panel |

Elements

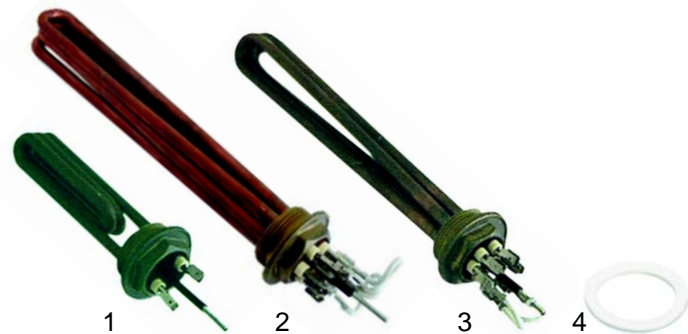


| Item | Order | Description |
|------|--------|---------------------------|
| 1 | 417059 | 1 + 2 groups, 3000W, 230V |
| 2 | 417060 | 2 + 3 groups, 4000W, 230V |
| 3 | 528023 | Gasket |



| Item | Order | Description |
|------|--------|-----------------------|
| 1 | 417061 | 1 groups, 950W, 230V |
| 2 | 417133 | 2 groups, 1300W, 230V |
| 3 | 528023 | Gasket |

Elements



| Item | Order | Description |
|------|--------|---------------------|
| 1 | 417045 | 1 1/4", 1500W, 230V |
| 2 | 417062 | 1 1/4", 3000W, 230V |
| 3 | 417063 | 1 1/4", 4500W, 230V |
| 4 | 528022 | Gasket, 1 1/4" |

Boiler gaskets



| Item | Order | Description |
|------|--------|----------------------------|
| 1 | 528162 | Boiler gasket |
| 2 | 528163 | Boiler gasket, 184 x 170mm |

Manometers



| Item | Order | Description |
|------|--------|-----------------------|
| 1 | 541286 | Manometer, 0 - 3 bar |
| 2 | 541287 | Manometer/doublescale |
| 3 | 541288 | Manometer/doublescale |

Valves



| Item | Order | Description |
|------|--------|------------------------------------|
| 1 | 529312 | Safety valve, 1,8 bar, 3/8" |
| 2 | 529316 | Safety valve/sealed, 1,8 bar, 3/8" |
| 3 | 529330 | Safety valve, 1,8 bar, M22 |
| 4 | 529349 | Cu-gasket, 3/8" |
| 5 | 528834 | Gasket (teflon), M22 |

Valves

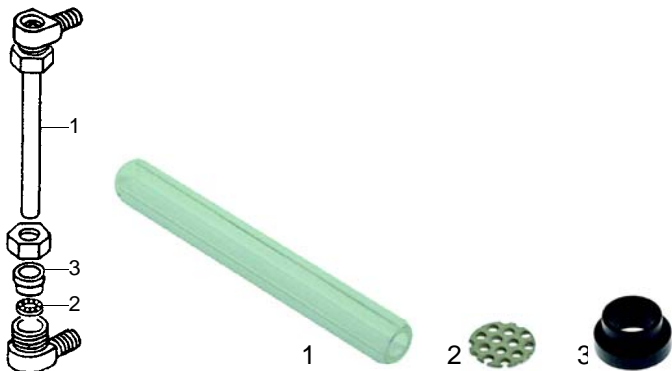


| Item | Order | Description |
|------|--------|-------------------------------------|
| 1 | 529303 | Empty valve (stainless steel), 1/4" |
| 2 | 529304 | Empty valve, 1/4" |
| 3 | 529361 | Cu-gasket, 1/4" |



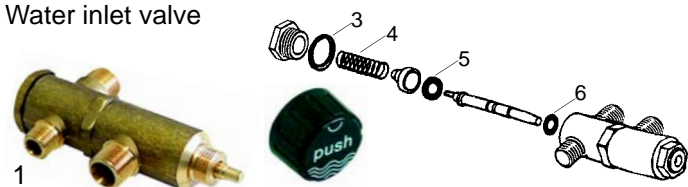
| Item | Order | Description |
|------|--------|------------------------------------|
| 1 | 529816 | Expansion and retention valve/cpl. |
| 2 | 529341 | Expansion valve, 1/8" |
| 3 | 529335 | Retention valve, 1/8" |

Level glass



| Item | Order | Description |
|------|--------|-------------------------|
| 1 | 529426 | Level glass, 115 x 12mm |
| 2 | 529428 | Filter washer |
| 3 | 529427 | Level glass gasket |

Water inlet valve

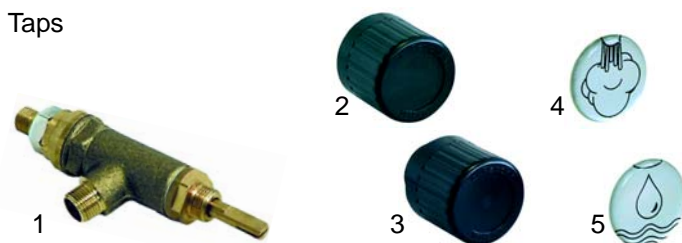


| Item | Order | Description |
|------|--------|------------------------|
| 1 | 529690 | Water inlet valve/cpl. |
| 2 | 111015 | Knob |



| Item | Order | Description |
|------|--------|-------------|
| 3 | 528640 | O-ring |
| 4 | 528835 | Spring |
| 5 | 528836 | Gasket |
| 6 | 528815 | O-ring |

Taps

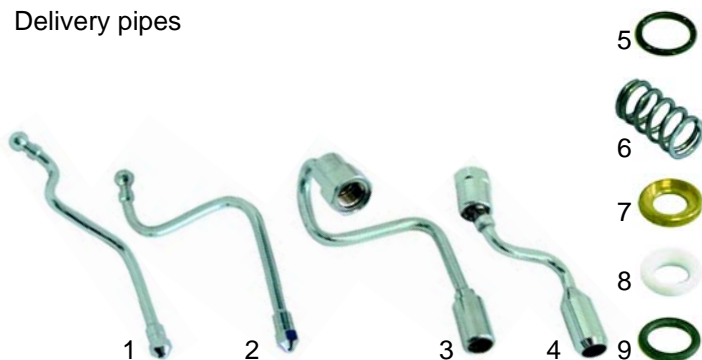


| Item | Order | Description |
|------|--------|---------------------------------------|
| 1 | 529693 | Steam/Water tap/cpl. |
| 1 | 529694 | Steam/Water tap/cpl. (chromium-plate) |
| 2 | 111135 | Knob (P1/P3) |
| 3 | 111136 | Knob (P6) |
| 4 | 111137 | Symbol/steam |
| 5 | 111138 | Symbol/water |



| Item | Order | Description |
|------|--------|------------------------|
| 1 | 528422 | Ball (stainless steel) |
| 2 | 528837 | Spring |
| 3 | 528475 | Spring |
| 4 | 528641 | Gasket |
| 5 | 528325 | Gasket |
| 6 | 528838 | Cu-gasket |
| 7 | 528839 | Gasket |
| 8 | 528400 | O-ring |

Delivery pipes



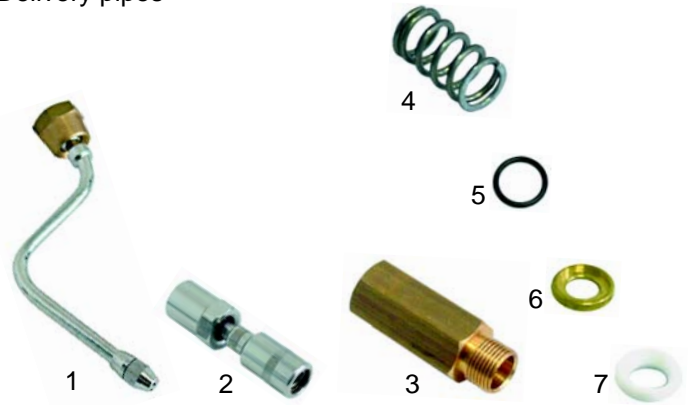
| Item | Order | Description |
|------|--------|----------------------|
| 1 | 529695 | Steam pipe (P1) |
| 2 | 529696 | Steam pipe (P3 - P6) |
| 3 | 529697 | Water pipe (P1) |
| 4 | 529698 | Water pipe (P3 - P6) |
| 5 | 528225 | Gasket |
| 6 | 529737 | Spring |
| 7 | 529736 | Bush |
| 8 | 528224 | Gasket (teflon) |
| 9 | 528223 | O-ring |

Taps, pipes

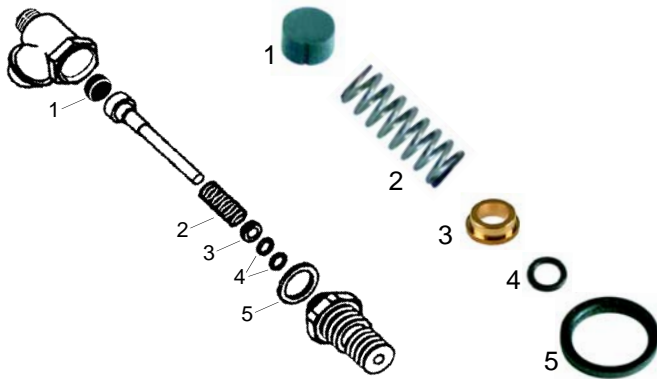


| Item | Order | Description | Model | OEM |
|------|--------|---------------------------------------|-------|-----|
| 1 | 529823 | Steam/Water tap/cpl. | | |
| 1 | 529824 | Steam/Water tap/cpl. (chromium-plate) | | |
| 2 | 111016 | Knob | | |
| 3 | 528762 | Cotter | | |
| 4 | 111017 | Cap/water | | |
| 5 | 111018 | Cap/steam | | |

Delivery pipes



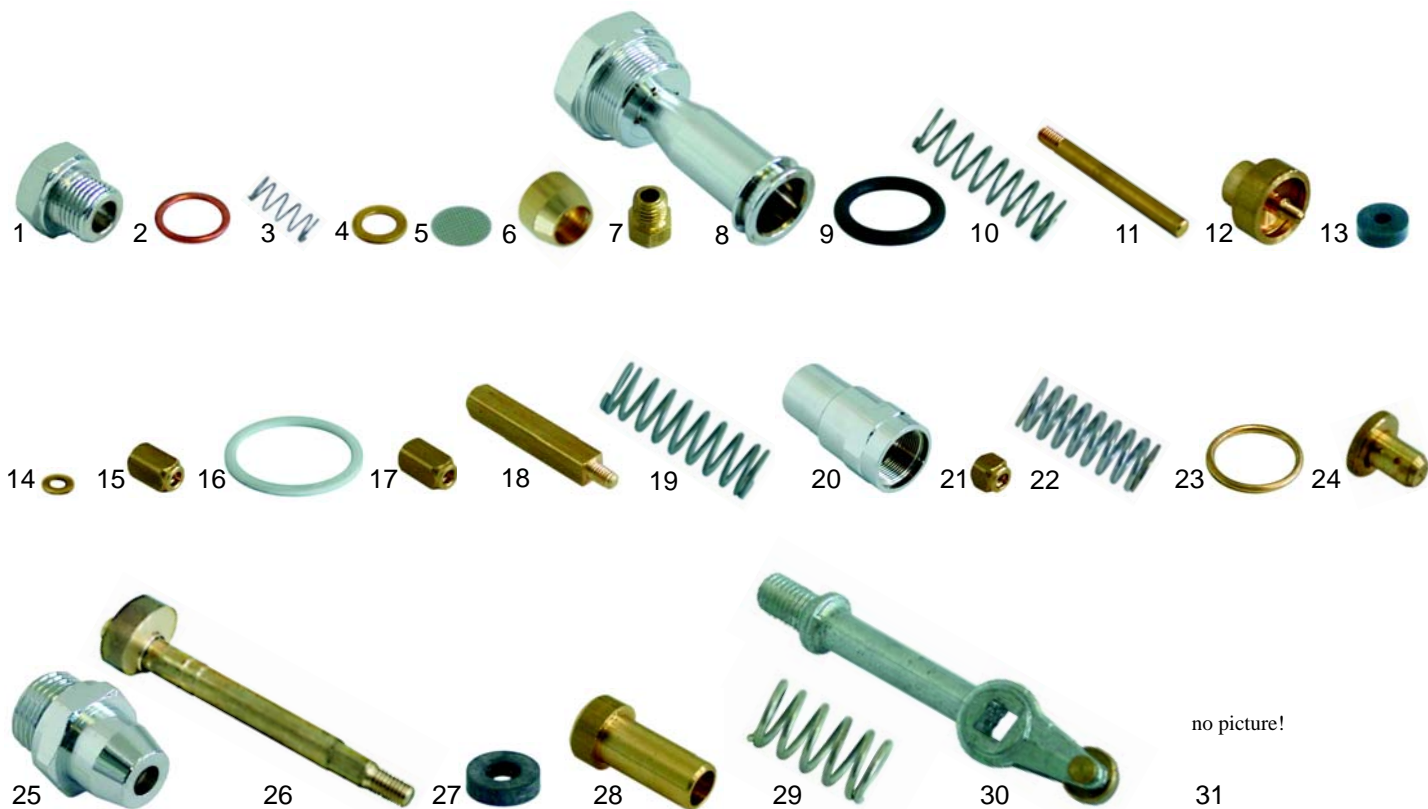
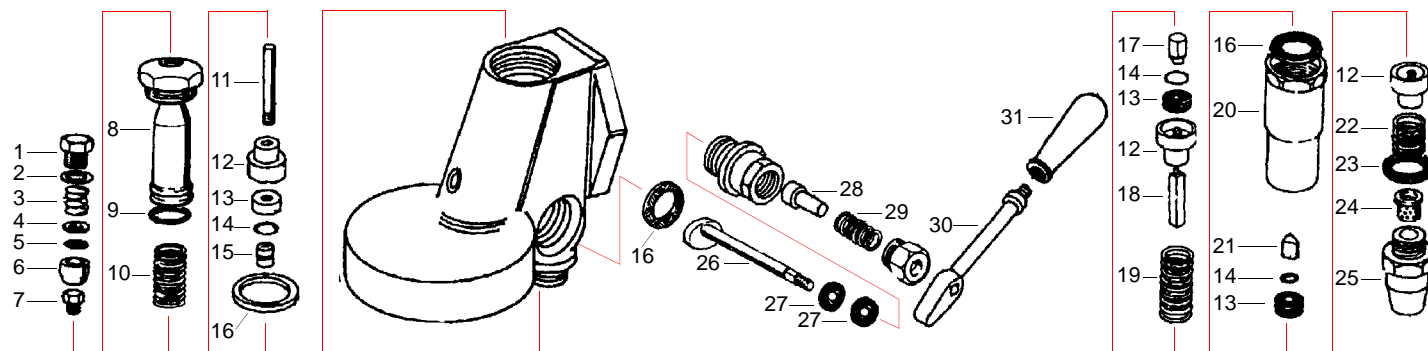
| Item | Order | Description | Model | OEM |
|------|--------|-------------------------|-------|-----|
| 1 | 529825 | Steam pipe (L, M, S, V) | | |
| 2 | 529826 | Water pipe (L, M, S, V) | | |
| 3 | 528841 | Nipple (M, V) | | |
| 4 | 529737 | Spring | | |
| 5 | 510302 | O-ring | | |
| 6 | 529736 | Bush | | |
| 7 | 528224 | Gasket (teflon) | | |



| Item | Order | Description |
|------|--------|-------------|
| 1 | 528398 | Gasket |
| 2 | 528484 | Spring |
| 3 | 528840 | Bush |
| 4 | 528400 | O-ring |
| 5 | 528401 | Gasket |

Group E61

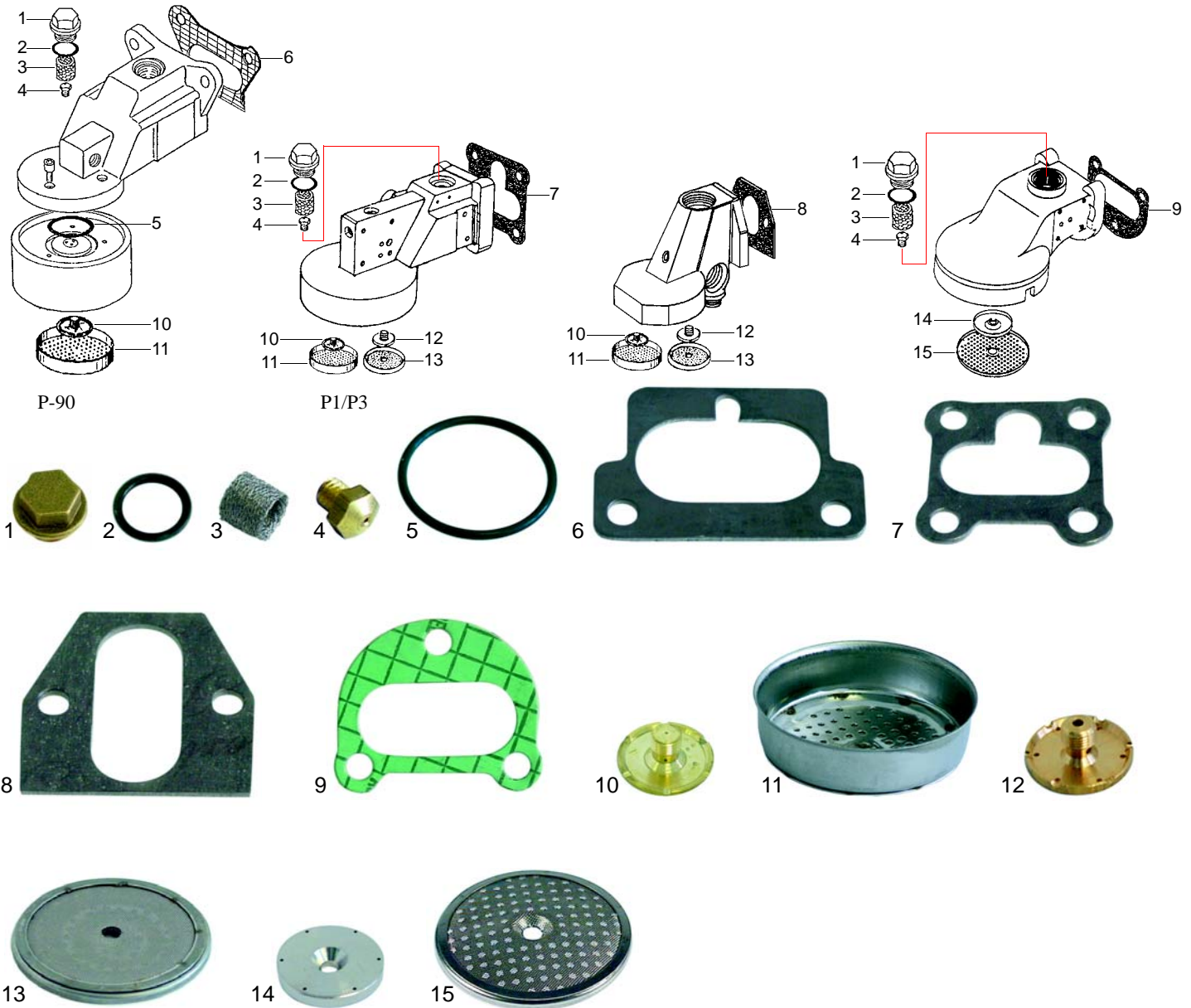
Suitable for Pavoni



no picture!

| Item | Order | Description | Item | Order | Description | Item | Order | Description |
|------|--------|-------------|------|--------|-----------------------|------|--------|------------------|
| 1 | 528519 | End cap | 12 | 528528 | Bush | 22 | 528475 | Spring |
| 2 | 528520 | Cu-gasket | 13 | 528494 | Gasket, 13 x 4 x 4 mm | 23 | 529360 | Cu-gasket |
| 3 | 528521 | Spring | 14 | 528529 | Washer | 24 | 528537 | Perlator |
| 4 | 528522 | Washer | 15 | 528530 | Hat nut, 11 mm | 25 | 528538 | Drain end part |
| 5 | 528326 | Filter | 16 | 528524 | Gasket (teflon) | 26 | 528539 | Shaft, eccentric |
| 6 | 528321 | Bush | 17 | 528531 | Hat nut, 12mm | 27 | 528495 | Gasket |
| 7 | 528486 | Jet | 18 | 528532 | Srew/long, infusion | 28 | 528541 | Bush |
| 8 | 528523 | Trumpet | 19 | 528533 | Spring | 29 | 528542 | Spring |
| 9 | 528525 | O-ring | 20 | 528534 | Connector | 30 | 528543 | Lever |
| 10 | 528526 | Spring | 21 | 528535 | Hat nut | 31 | 111036 | Handle |
| 11 | 528527 | Shaft | | | | | | |

Group



| Item | Order | Description | Item | Order | Description | Item | Order | Description |
|------|--------|-------------|------|--------|--------------|------|--------|-------------|
| 1 | 528316 | End cap | 6 | 528141 | Group gasket | 11 | 529080 | Shower |
| 2 | 528251 | O-ring | 7 | 528842 | Group gasket | 12 | 528845 | Dispersion |
| 3 | 528317 | Filter | 8 | 528943 | Group gasket | 13 | 529085 | Shower |
| 4 | 528176 | Jet | 9 | 528844 | Group gasket | 14 | 528846 | Dispersion |
| 5 | 528178 | Bell O-ring | 10 | 529081 | Dispersion | 15 | 529144 | Shower |

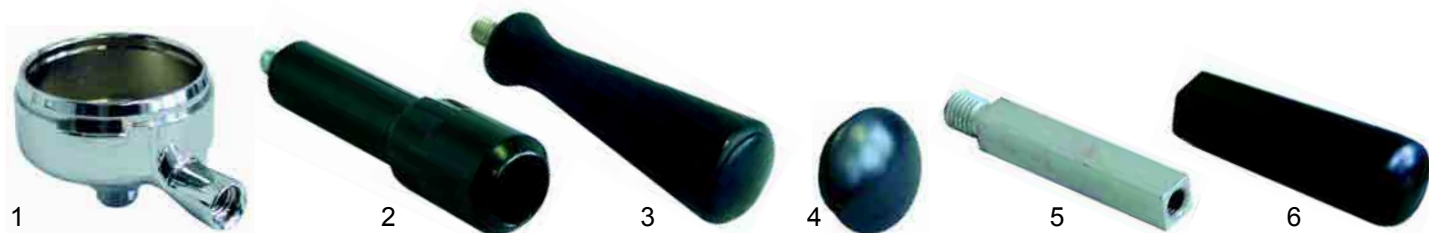
Filter holder gaskets, filters

Suitable for Pavoni



| Item | Order | Description | Item | Order | Description | Item | Order | Description |
|------|--------|---------------------------------------|------|--------|----------------------|------|--------|----------------------|
| 1 | 528033 | Shim gasket, 71 x 68mm | 3 | 529012 | Filter, 1 cup (6g) | 4 | 529013 | Filter, 2 cups (14g) |
| 2 | 528030 | Filter holder gasket, 73 x 57 x 8mm | 3 | 529011 | Filter, 1 cup (7g) | 5 | 529023 | Blank filter |
| 3 | 528031 | Filter holder gasket, 73 x 57 x 8,5mm | 4 | 529014 | Filter, 2 cups (12g) | 6 | 529079 | Filter spring |

Filter holder



| Item | Order | Description | Item | Order | Description | Item | Order | Description |
|------|--------|---------------------------|------|--------|---------------------------|------|--------|----------------------|
| 1 | 529034 | Filter holder, 3/8", M10 | 3 | 529167 | Filter holder handle, M12 | 5 | 529048 | Extension |
| 2 | 529044 | Filter holder handle, M12 | 4 | 529206 | Handle/cap | 6 | 529105 | Filter holder handle |

Spouts



| Item | Order | Description | Item | Order | Description |
|------|--------|-----------------------------|------|--------|-----------------------------------|
| 1 | 529002 | 3/8", 1 way, straight/short | 5 | 529004 | 3/8", 1 way, curved/closed |
| 2 | 529001 | 3/8", 1 way, straight/long | 6 | 529008 | 3/8", 2 ways, distance 44mm |
| 3 | 529005 | 3/8", 1 way, curved/short | 7 | 529007 | 3/8", 2 ways, distance 55mm/short |
| 4 | 529003 | 3/8", 1 way, curved/long | 8 | 529006 | 3/8", 2 ways, distance 55mm/long |